



Using the PPTP Server feature of the Citadel CL-Series router

Table of Contents

Table of Contents	1
Point-to-Point Tunneling Protocol (PPTP)	2
Configuring your Citadel CL-Series router.....	3
Configuring your Windows XP.....	6
Create a new connection using the "new connection wizard"	6

Point-to-Point Tunneling Protocol (PPTP)

You can access a private network through the Internet or other public network by using a virtual private network ([VPN](#)) connection with the Point-to-Point Tunneling Protocol (PPTP).

PPTP enables the secure transfer of data from a remote computer to a private network by creating a VPN across TCP/IP-based data networks. PPTP supports on-demand, multiprotocol, virtual private networking over public networks, such as the Internet.

Developed as an extension of the Point-to-Point Protocol (PPP), PPTP adds a new level of enhanced security and multiprotocol communications over the Internet. Specifically, by using the new Extensible Authentication Protocol (EAP), data transfer through a PPTP-enabled VPN is as secure as within a single LAN at a corporate site.

PPTP does not require a dial-up connection. It does, however, require IP connectivity between your computer and the PPTP server.

Citadel CL-Series router provides PPTP Server functionality to provide secured user-to-site connectivity to the corporate network over the Internet.

Configuring your Citadel CL-Series router

In order to enable the PPTP Server on the Citadel router, go to "PPTP VPN" on the left menu and select the checkbox "Enable PPTP Server".

You might change the "Client IP Address Range" to be in the same network as your LAN. Please note: the address range must not overlap with the Citadel's DHCP server scope, or any other address on your local network, otherwise an IP address conflict might occur. If your Citadel's DHCP server is disabled but the scopes still overlap, you might need to enable the Citadel's DHCP server temporarily, change the scope, and disable the Citadel DHCP server again.

"Local IP Address" can be changed to be the same as your LAN interface address (192.168.1.1 as default)

It is highly recommended to enable authentication in order to connect to the PPTP Server from remote locations. In order to enable username/password-based authentication, "PAP, CHAP, MSCHAPv2" should be selected in the "Authentication" option.

In order to encrypt all data transfer over the PPTP connection, you may choose "MSCHAPv2 and Encryption" on the "Authentication" option.

Click "Apply" to confirm the PPTP Server configuration.

ATERA networks

PPTP VPN

PPTP VPN

PPTP VPN Server

The PPTP VPN Server allows remote users (who are connected to the Internet) to connect to your local area network (LAN). The server is compatible with both Windows and Linux PPTP clients

Enable PPTP Server :

Enter the IP addresses for the tunnel end-points. You are also required to specify a Local IP Address which VPN clients will use when connecting to this Router. Please ensure that the IP addresses listed here are not overlapped with your DHCP IP pool.

Client IP Address Range : (eg:192.168.36.2-100)

Local IP Address : (eg:192.168.36.1)

Select the authentication scheme used to validate connecting clients.

Authentication :

- None
- PAP, CHAP, MSCHAPv2 (authentication but no Encryption)
- MSCHAPv2 and Encryption (40/128) (recommended stronger authentication plus data privacy)

Apply **Cancel**

Done Internet

In order to create user accounts in the PPTP Server, type in the desired username and password in the "PPTP User Account" section, and click "Add". You may add several usernames with different passwords in order to support multiple remote user access to the PPTP Server.

PPTP User Account

Username :

Password :

Confirm Password :

Add

Select	Username
<input type="radio"/>	user-1

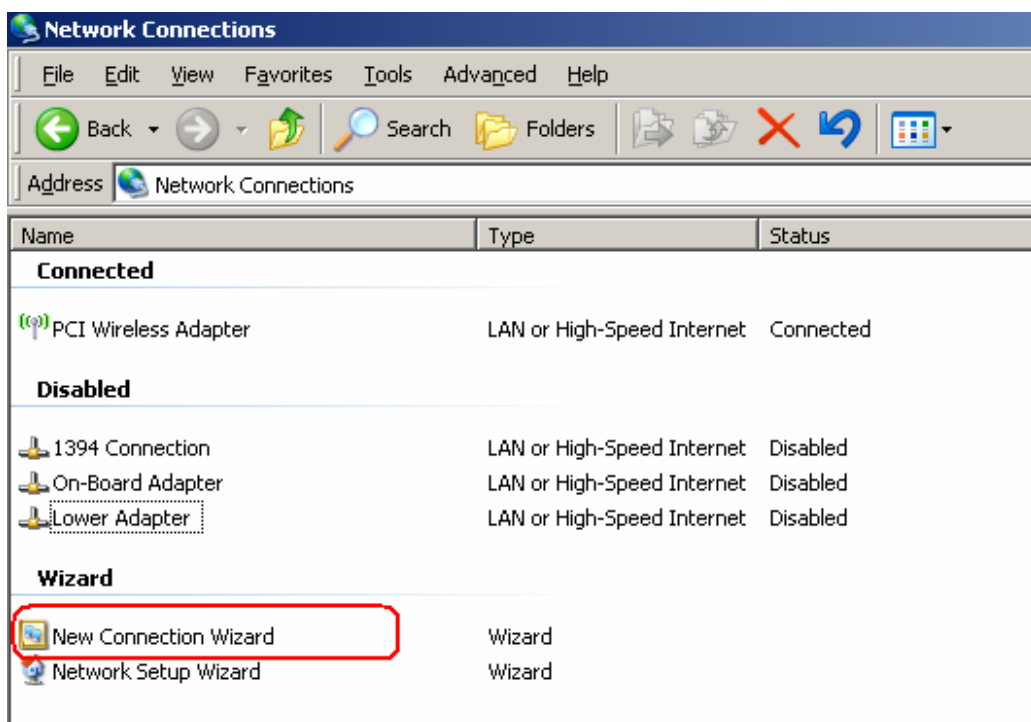
Delete

Configuring your Windows XP

Create a new connection using the "new connection wizard"

To create a new PPTP connection on your remote computer, follow the steps:

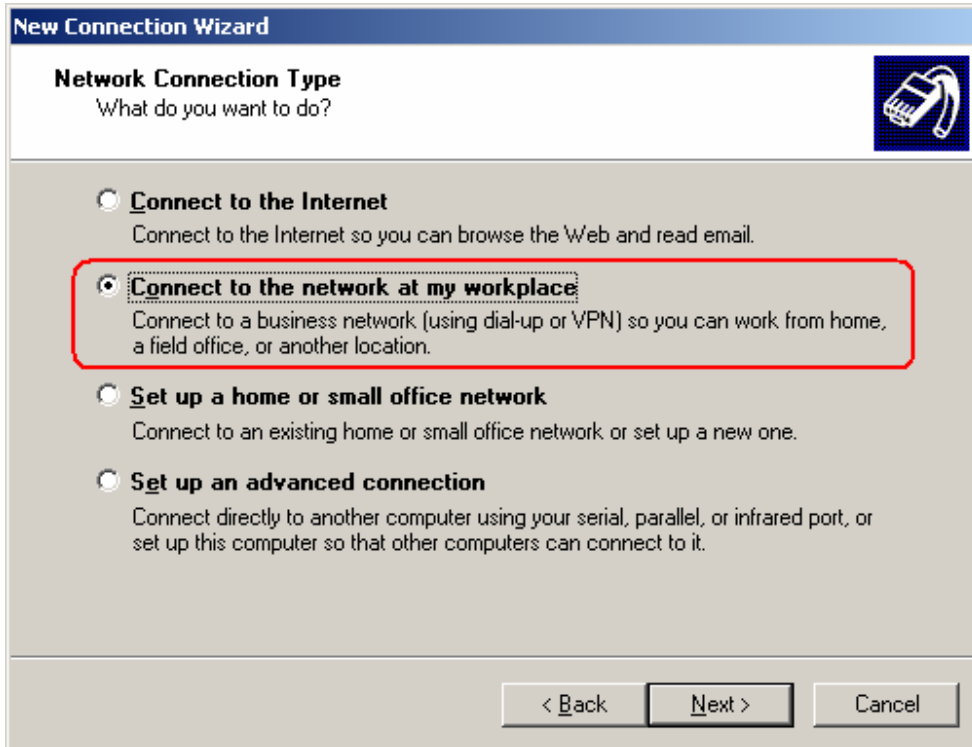
Click "Start" → "Control Panel" → "Network Connections" and then click "New Connection Wizard".



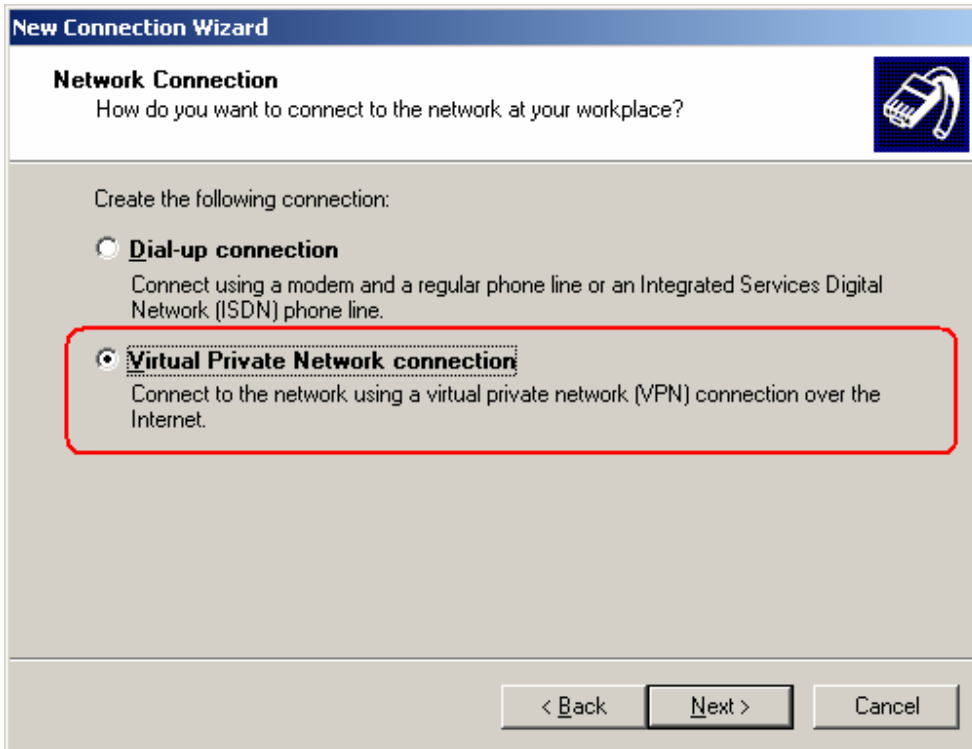
The following window will appear. Click start to continue to the next page.



Choose "Connect to the network at my workplace" and click "Next"



Choose "Virtual Private Network connection" and click "Next"



Insert your company name (this will be the name of the connection you're now creating) and click "Next".

New Connection Wizard

Connection Name
Specify a name for this connection to your workplace.

Type a name for this connection in the following box.

Company Name

My Company

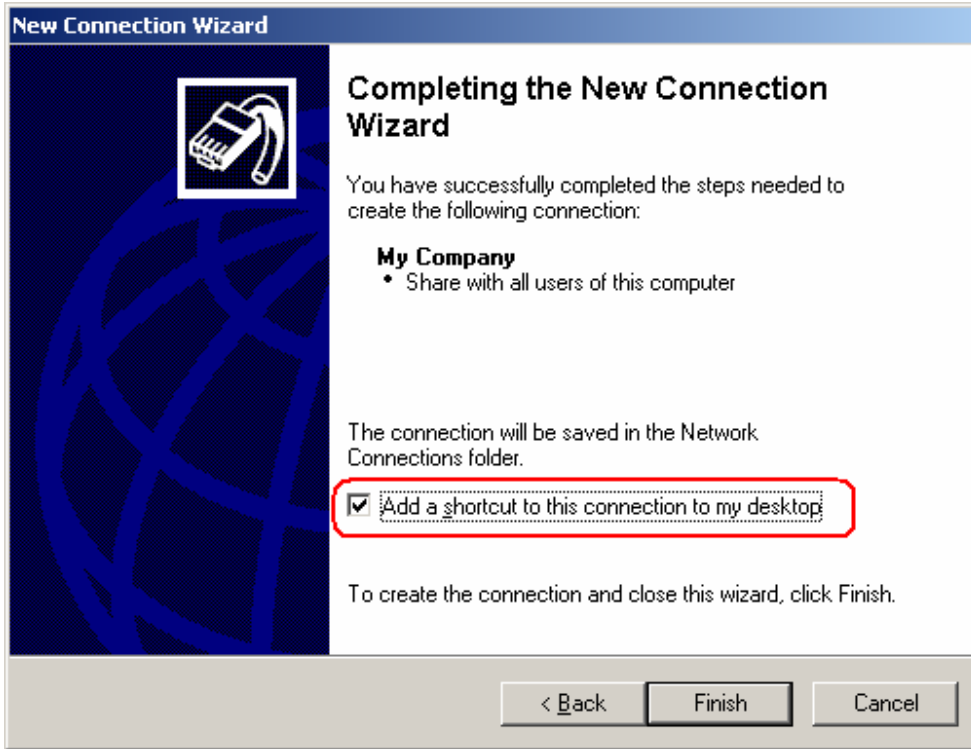
For example, you could type the name of your workplace or the name of a server you will connect to.

< Back Next > Cancel

Insert the remote Citadel's WAN (Internet) IP address / hostname.

The image shows a screenshot of a Windows-style dialog box titled "New Connection Wizard". The main heading is "VPN Server Selection" with a sub-question: "What is the name or address of the VPN server?". To the right of the heading is a small icon of a computer with a network cable. Below the heading, there is a text prompt: "Type the host name or Internet Protocol (IP) address of the computer to which you are connecting." followed by a label "Host name or IP address (for example, microsoft.com or 157.54.0.1):" and an empty text input field. At the bottom of the dialog, there are three buttons: "< Back", "Next >", and "Cancel".

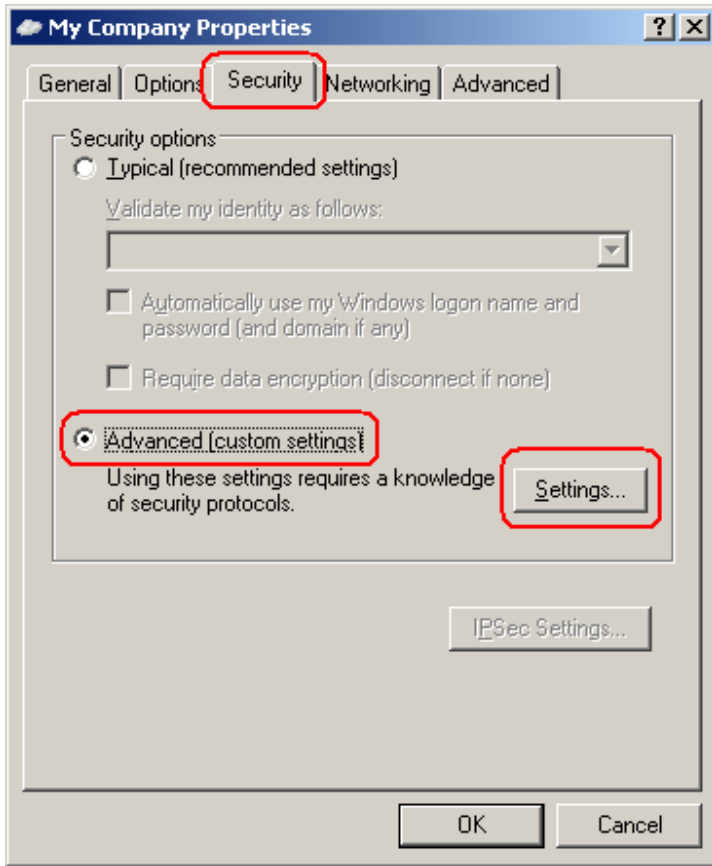
You might choose to place a shortcut for this connection on your desktop. Click "Finish" to finish the connection creation process.



After creating your new PPTP Client account, you'll have to configure your detailed account information. Click "Properties" to configure the connection properties.



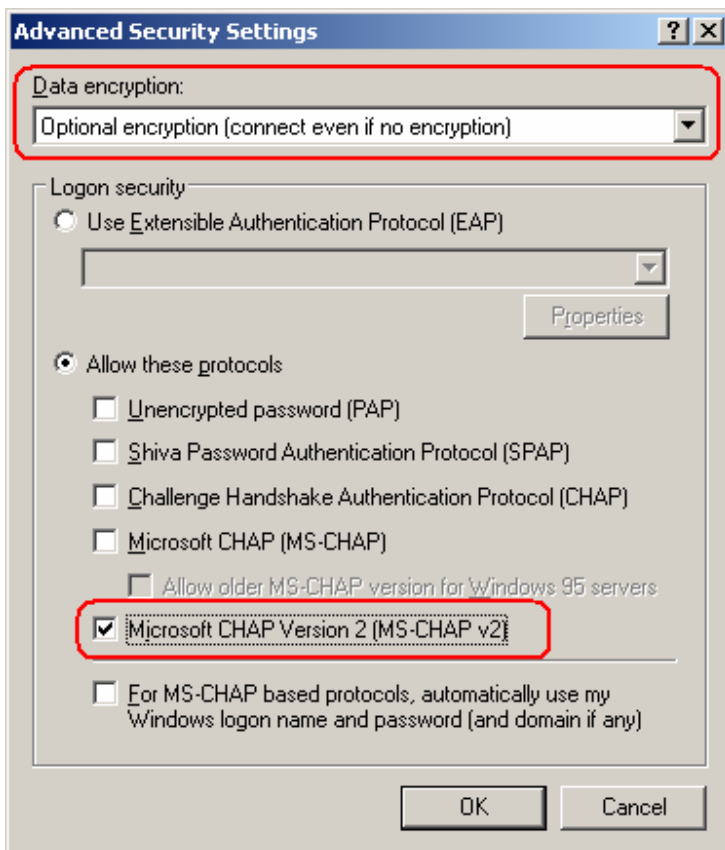
In the "Security" tab choose "Advanced (custom settings)" and click "Settings..."



Configuring non-encrypted connection:

Make sure "PAP, CHAP, MSCHAPv2" is selected in the "Authentication" option of the Citadel PPTP configuration page (see above for details).

In the "Data encryption" drop-down, choose "**Optional encryption (connect even if no encryption)**". In "Logon security" section choose "Allow these protocols" and mark "Microsoft CHAP Version 2 (MS-CHAP v2)" only.

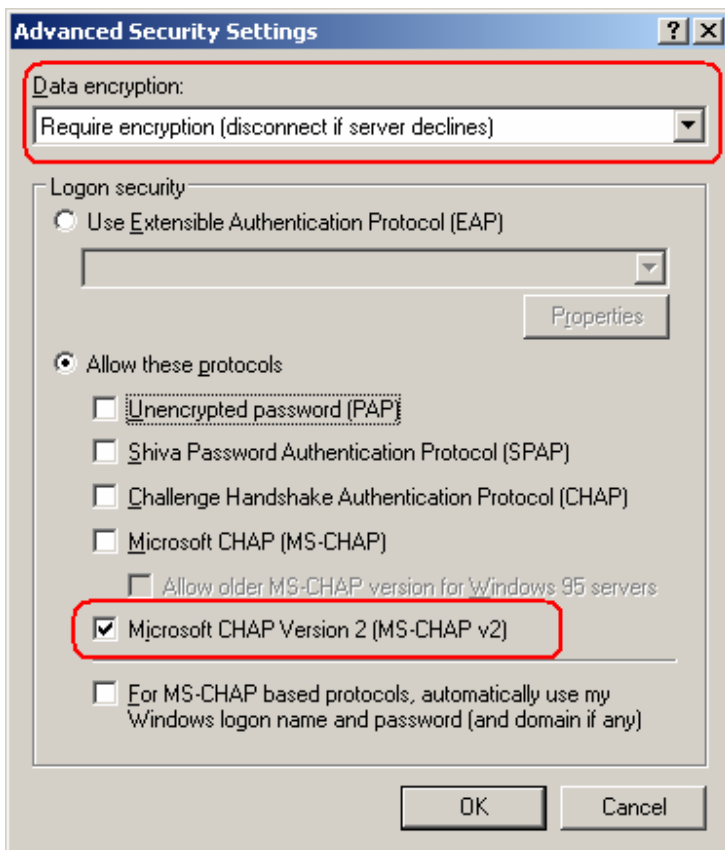


Click "OK" to accept the configuration".

Configuring encrypted connection:

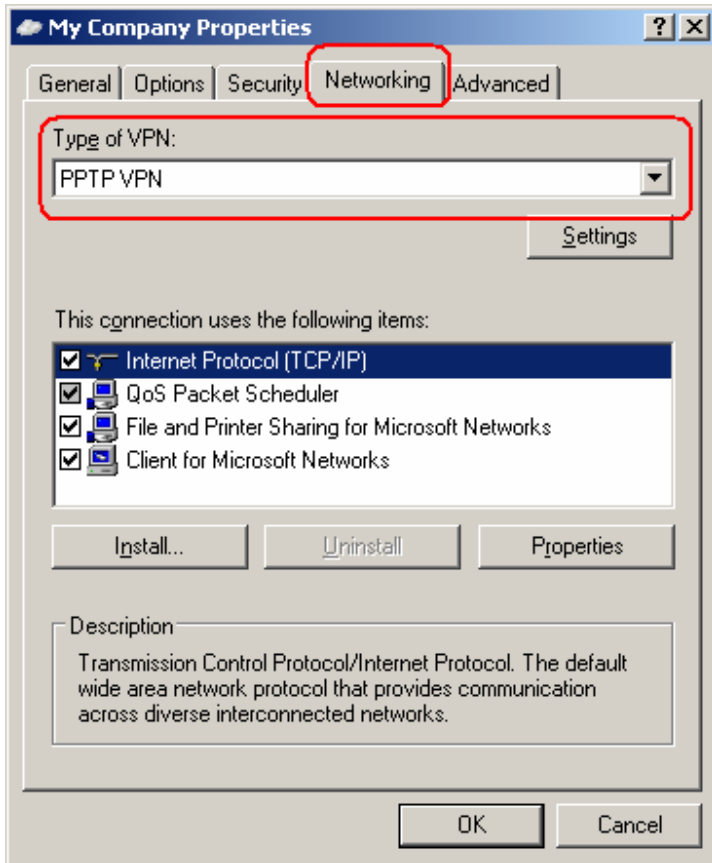
Make sure "MSCHAPv2 and Encryption" is selected in the "Authentication" option of the Citadel PPTP configuration page (see above for details).

In the "Data encryption" drop-down, choose "**Require encryption (disconnect if server declines)**" or "**Maximum strength encryption**". In "Logon security" section choose "Allow these protocols" and mark "Microsoft CHAP Version 2 (MS-CHAP v2)" only.



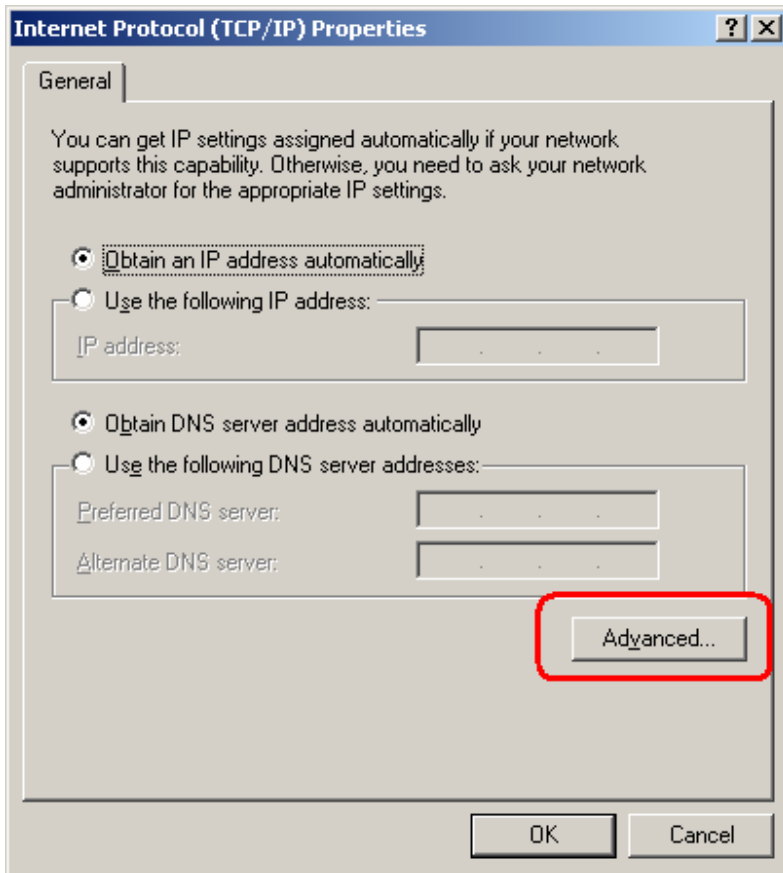
Click "OK" to accept the configuration".

In the "Networking" tab, configure the "Type of VPN" drop-down to "PPTP VPN".

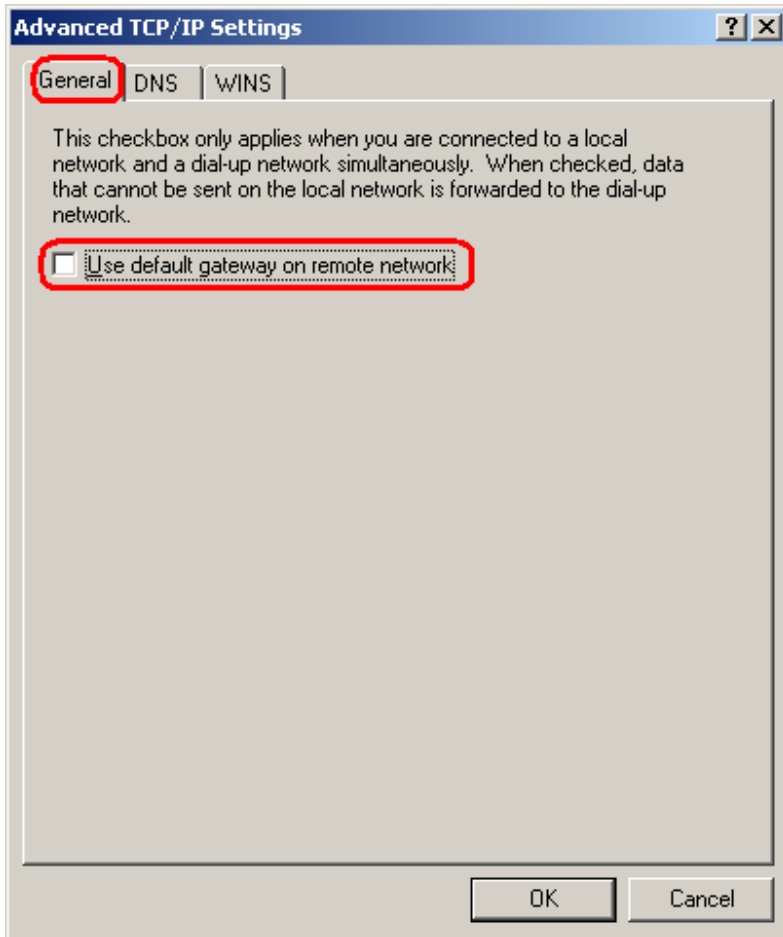


If your Citadel's PPTP Server was configured with "Client IP address range" which is a part of your local network, follow these instructions:

From "This connection uses the following items" list, select "Internet Protocol (TCP/IP) and click Properties.



In the "General" tab, uncheck the "Use default gateway on remote network".



Click OK to accept the configuration.

You can now enter your username and password as were configured in the Citadel's PPTP Server configuration and click "Connect" to establish the PPTP connection.

